



ABOLAND

PERFUME DESIGN & MANUFACTURE

# Sequence

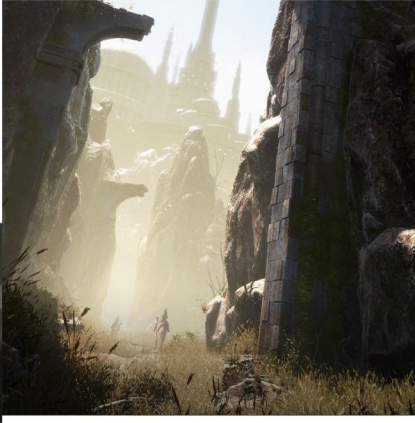


## Inspiration /

Inspired by the skylines of modern cities, the design condenses the layered and orderly feel of skyscrapers into tangible art. Each bottle of perfume is likened to a city, its color and scent corresponding to the unique character of that city (such as the romance of Paris, the vibrancy of New York, the sophistication of Tokyo, and the modernity of Shanghai). The stacked form symbolizes the convergence and symbiosis of these urban civilizations. Each bottle of perfume is a miniature city landmark.



# Ruins

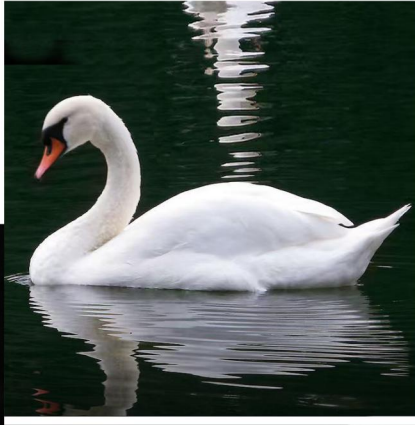


## Inspiration /

Inspired by a dialogue between time and nature, gazing upon ancient ruins eroded by wind and sand, we discover a serene and resilient beauty amidst desolation and fragmentation. The "Ruins" series is an art form about time. The rock-textured cap and weathered bottle body encapsulate the breath of the earth and the sedimentation of history. When you open it, you awaken dormant vitality, feeling the embers of civilization and the fragrance of new life amidst the ruins.



# Swan



## Inspiration /

Inspired by the elegant and noble posture of the swan, this "Swan" perfume perfectly replicates the graceful curves of the swan in its exquisite crystal bottle. The white and gold two-tone design showcases both purity and elegance, while also exuding luxury and prestige. The bottle stands in the center of water, its clear reflection creating the illusion of a swan gracefully gliding across the surface, capturing elegance and romance in a fleeting moment and offering you a feast for both the eyes and the nose.



# *Nougat*



## Inspiration /

Inspired by the simplicity and purity of handmade nougat, the "Nougat" perfume bottle features a rugged, rock-like texture, like a wrapper around a sweet candy, while the perfume inside is the delicate fragrance hidden within. It tells a story of contrast and discovery: beneath a seemingly hard exterior often lies the gentlest and most surprising beauty, waiting to be discovered.



# Window

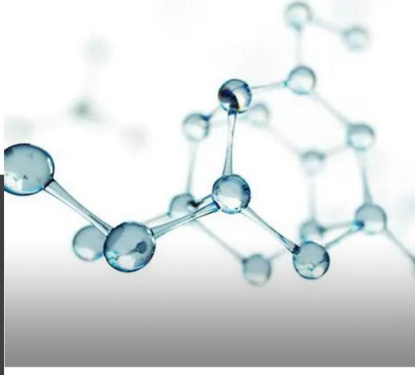


## Inspiration /

Inspired by the "window"—an eternal image connecting the inner and outer worlds—the "window," with its unique geometric opening, carves out a transparent space within the rugged bottle, like opening a window to the heart or to distant places. Its story is about exploration and discovery: each opening is a sensory journey. Through this "window," you can glimpse the fragrance flowing within the bottle, see the ever-changing scenery outside, and feel the resonance between your inner self and the world.



# Dopamine



## Inspiration /

Inspired by the neurotransmitters that transmit happiness in the brain, we've personified that pure joy as adorable Mickey Mouse ears on the bottle cap and a soft rainbow gradient on the bottle itself. Every spray is a trigger for happiness, immersing you in a world of joy built from color and fragrance anytime, anywhere, illuminating every dopamine-fueled moment in life.



# *Rainbow clouds*



## Inspiration /

Inspired by clouds, this fragrance aims to create a light, dreamy and gentle atmosphere, evoking a romantic imagination as if one were floating in the clouds. It aligns with the possible fresh and sweet characteristics that perfumes can possess. The overall shape is in the form of a cloud. The bottle cap is designed in a fluffy cloud-like shape, round and plump, with a sense of three-dimensionality and realism, as if a soft cloud is floating at the mouth of the bottle. The bottle body also imitates the shape of a cloud, with gentle and smooth lines, presenting a natural irregular shape, giving a feeling of liveliness and elegance.



# Boundary



## Inspiration /

The design of this series of perfume bottles is inspired by the combination of modern architecture and minimalist aesthetics, embodying a simple, elegant and fashionable style. The overall shape is square with rounded corners, and the bottle cap features a unique texture design, adding visual depth and tactile interest. The color combination of the bottle body and the bottom is contrasting, with the black base being stable and solid, while the transparent or colored bottle body showcases the color of the perfume.



# Fluid



## Inspiration /

The inspiration for "Fluid" comes from capturing the transition between solid and liquid states: "Metals melt into a liquid state at high temperatures and then solidify into a free form in motion" - The bottle's lines are smooth and dynamic, as if possessing life. The ups and downs and turns of the lines are natural and smooth, without harsh edges, giving a gentle and elegant feeling.

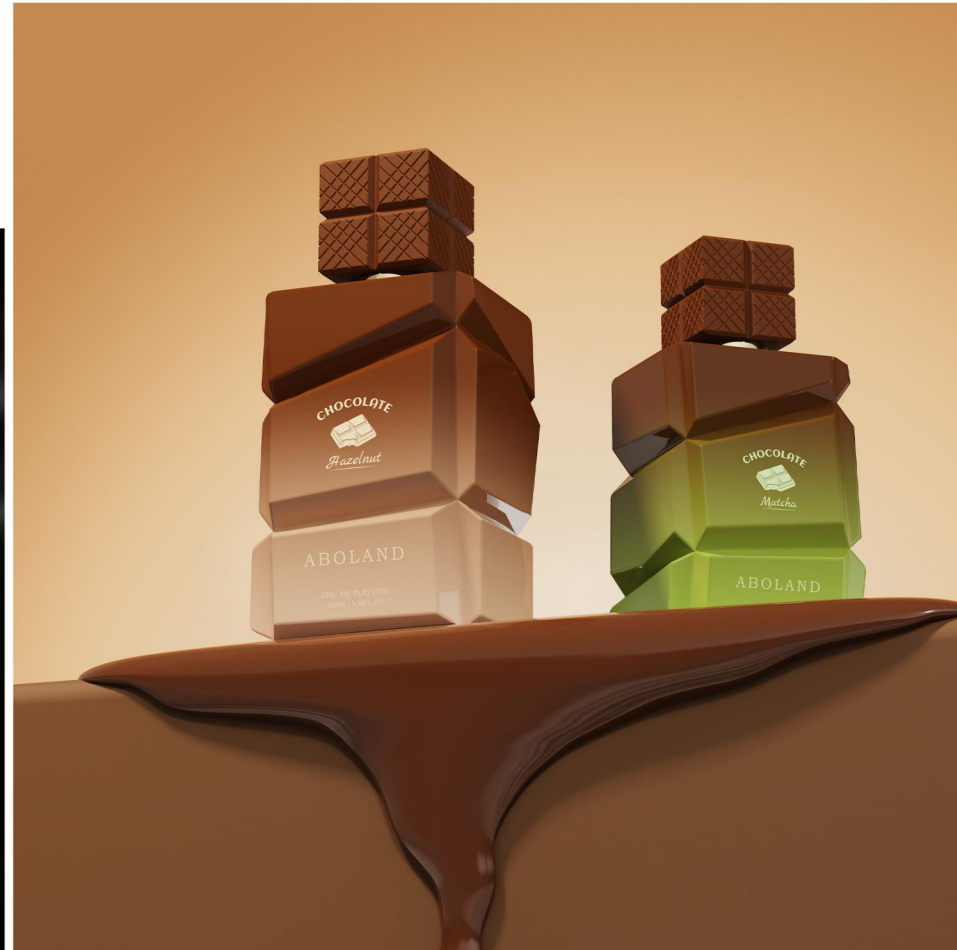


# chocolate



## Inspiration /

This perfume bottle is inspired by chocolate, integrating the sweet and alluring qualities of chocolate into the design of the perfume bottle, evoking associations of deliciousness and pleasure. The overall shape mimics the block-like form of chocolate, presenting an irregular polyhedral shape, similar to a sliced chocolate block. This unique and three-dimensional design breaks away from the conventional shape of traditional perfume bottles, providing a novel and distinctive visual experience.



# Wood Grain



## Inspiration /

The inspiration for "Wood Grain" comes from the rock textures in nature, aiming to create a unique atmosphere that is both natural and modern, both rugged and refined. The overall shape is a square rectangle, giving a sense of stability and grandeur. The bottle cap is made of wood and is cylindrical, contrasting with the square shape of the bottle body, adding elements of natural simplicity. The wooden frame wrapped around the outside of the bottle further reinforces the natural style, while the glass inside the bottle showcases delicacy and transparency.



# ROSE



## Inspiration /

The design of this perfume bottle is inspired by the rose. It ingeniously combines the shape of the rose with the design of the perfume bottle. The overall shape is a square glass bottle with a unique bottle cap design. The bottle cap resembles the layered petals of a rose, presenting a sense of three-dimensionality and layering. The square body gives a feeling of stability and grandeur, contrasting with the softness of the bottle cap, creating a balance of hardness and softness. The lines of the bottle body are simple and smooth, with straight and tough contour lines. The middle part of the bottle is the visual focus, and the three-dimensional rose shape inside is the core highlight of the design.



# Newborn



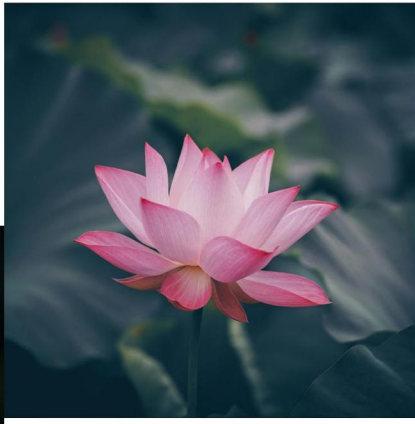
## Inspiration /

This design symbolizes the birth, breakthrough and rebirth of new life. During the design process, we were inspired by the power of life in nature. The egg that breaks out of its shell feels full of strength and beauty, symbolizing the beginning of life.

Therefore, we incorporated this element into the design of the perfume bottle, with two irregular fittings showing the moment of shell-breaking, and the bottle customized in gold or silver to symbolize the dawn or hope, highlighting the sparkle of new life.



# Lotus



## Inspiration /

The design inspiration of this perfume bottle is lotus. Lotus symbolizes purity, holiness and beauty in religion and incense culture. The lid is designed as a blooming lotus, and the body of the bottle mimics the erect stem of the lotus through streamlined lines.

This is a combination of perfume packaging and natural themes, integrated into traditional Chinese culture, to form an elegant visual image.



# Cullinan



## Inspiration /

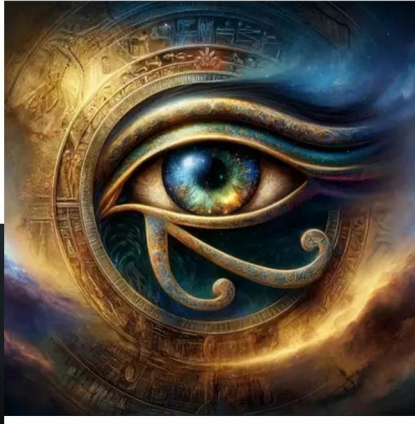
In 1905, a huge, colorless, flawless diamond was discovered in a South African diamond mine and named Cullinan, which was later set in the scepter of the King of England. The designer was inspired to create this perfume bottle.

The surface of the bottle is designed to resemble the cut form of the Cullinan diamond, which is delicate and elegant. In the light, each cut surface subtly refracts the light, revealing an indescribable geometric elegance and translucent texture.

Designed with simplicity and sophistication in mind, the cap perfectly complements the bottle with its smooth lines and harmonious proportions. It not only accentuates the brilliance of the bottle, but also enhances its overall modern and elegant aesthetic, making it truly memorable.



# Eye of Horus



## Inspiration /

This perfume bottle finds its inspiration in the legendary eyes of Horus, the esteemed eagle-headed deity of ancient Egyptian culture. The emblem of Horus's eye, a timeless and striking symbol, has been cherished throughout the ages and stands as one of Egypt's most powerful icons. It embodies the idea of an omnipotent and omniscient guardian eye, warding off suffering, defeating malice, and preserving well-being and joy. With remarkable creativity, the designer has artfully integrated this potent symbol into the bottle's design, crafting both the texture and visual aesthetics to resonate deeply with people.



# Dream

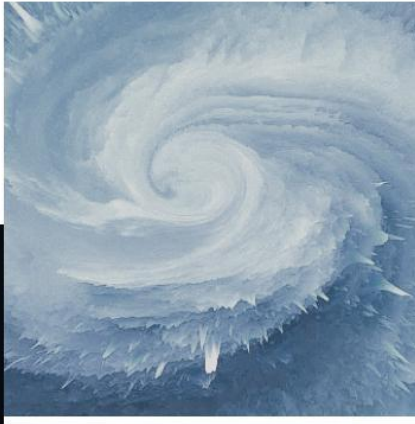


## Inspiration /

The name of this perfume bottle is Dream. The cylindrical bottle suggests the eternal cycle of dreams - the rise, diffusion, and dissipation of aromas, as dreams periodically evolve from light sleep to deep sleep and then to awakening. The honeycomb shape of the bottle's shell echoes the fragmented nature of human dreams. The scent of perfume flows between the honeycomb grid, and the path of diffusion becomes unpredictable, just like the logically fractured narrative in dreams, making people walk between wakefulness and trance.



# *Ice Vortex*



## Inspiration /

The design is inspired by the whirlpool of water, and the bottom is combined with the sharp corners of the triangle, which is full of movement and gives people a sense of spirituality.



# Hit Your Heart

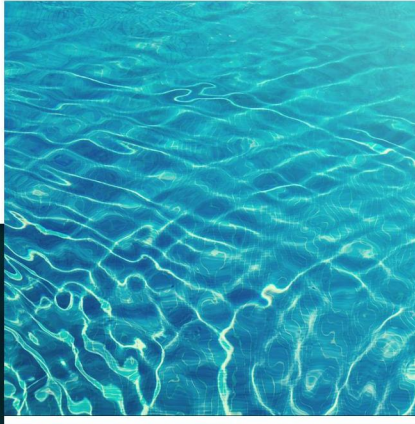


## Inspiration /

The name of this perfume bottle is "Hit Your Heart". Its design inspiration stems from the moment a bullet hits its target, cleverly capturing and freezing this powerful and tense instant, incorporating it into an exquisite perfume bottle. When the imaginary "bullet" hits the bottle, it not only symbolizes an instantaneous explosive force but also signifies that the fragrance, like precisely released energy, spreads instantly with unparalleled speed and intensity. Its aroma fills the air, like an irresistible wave, piercing through every sensory barrier with precision and depth, reaching the softest spot in the heart and awakening the most sincere emotions and memories deep within.



# Water Ripples



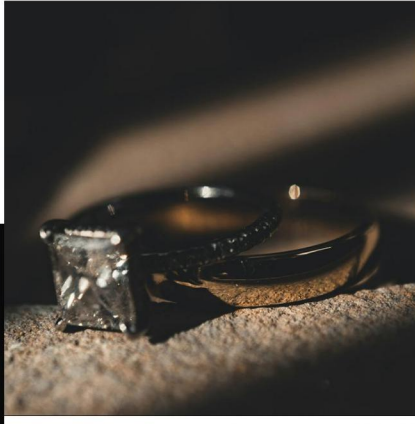
## Inspiration /

The design inspiration for the "Water Ripples" perfume bottle is derived from the mesmerizing patterns of water. Water ripples are not just the visual symphony of nature; they are its rhythm and pulse. The bottle, adorned with intricate water wave designs, transports you to a serene lake, where the tranquility and purity of nature envelop you.

Building upon the golden water ripple pattern, the incorporation of diverse colored textures enhances the simulation of the aesthetic beauty of water waves changing under different lighting conditions.



# Square Diamond



## Inspiration /

Inspired by the rare and elegant "Square Diamond," the design of this perfume bottle embodies the ultimate fusion of simplicity and luxurious texture. The sleek, clean lines and radiant light exude a timeless elegance, making it a standout piece.

The cap is adorned with a transparent part, resembling a dazzling diamond that catches the light beautifully. A crisp dividing line separates the body of bottle, accentuating the bottle's high-end, sophisticated aesthetic. This perfume bottle is not just a container; it's a masterpiece of simplicity and luxury.



# *Volcanoes of Nature*

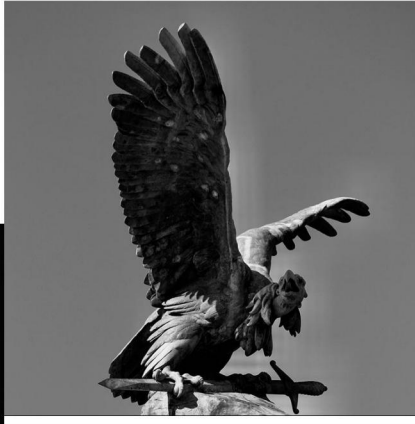


## Inspiration /

Inspired by the awe-inspiring volcanoes of nature, this perfume bottle symbolizes the warmth and unyielding strength found within the earth's crust. Its design masterfully balances the grandeur of a volcano with the elegance of a fragrance container. The bottle adopts a sleek and dynamic design that mimics the flowing form of volcanic lava, not only capturing the essence of volcanic energy but also providing a striking visual impact that sets it apart. Each bottle is a testament to the harmony between nature's raw power and the refinement of perfume artistry.



# Eagle



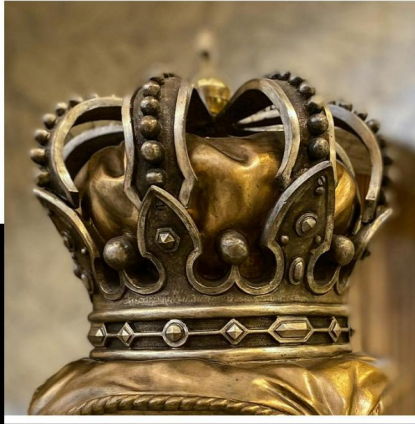
## Inspiration /

The eagle represents great ambition, its athletic posture and soaring in the sky, like those who bravely pursue success in the wide world, they are not afraid of difficulties, go forward, and always maintain a firm pursuit of the goal. As the surface of this perfume bottle is carved with intricate patterns simulating the eagle's wings.

The cap seems to put on a gorgeous crown for the whole bottle, revealing a mysterious and elegant beauty, and the cap in the shape of an eagle's head echoes the overall design of the bottle, adding a vividness and interest to the whole work.



# Crown



## Inspiration /

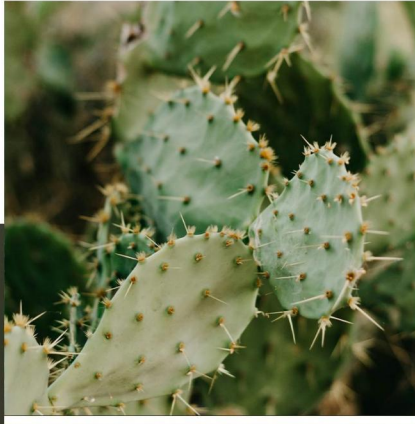
This perfume bottle is inspired by the crown, and the cap is directly in the shape of a crown, which is exquisite and gorgeous, and is the finishing touch to the whole design.

The lines of the bottle are smooth and elegant, echoing the silhouette of the crown. The concave and convex design of the center of the bottle adds a sense of luxury.

The metallic design complements the golden splendor of the crown, while the flocking design enhances the sense of luxury.



# Cactus



## Inspiration /

"Cactus", cloaked in green, and gold dots resembling cactus thorns. It's so vigorous that it stands upright wherever it grows. Whether in the hot summer or the arid desert, other plants may have hung their heads, but the cactus will always be like a warrior, standing tall, and looking up to the blue sky.



# Handbag



## Inspiration /

The design of the perfume bottle is inspired by a lovely handbag. A handbag designed in the shape of a perfume bottle or with perfume bottle elements, which is extremely fashion and sophisticated. It tends to pay more attention to creativity and personalized expression, suitable for consumers who pursue unique style.

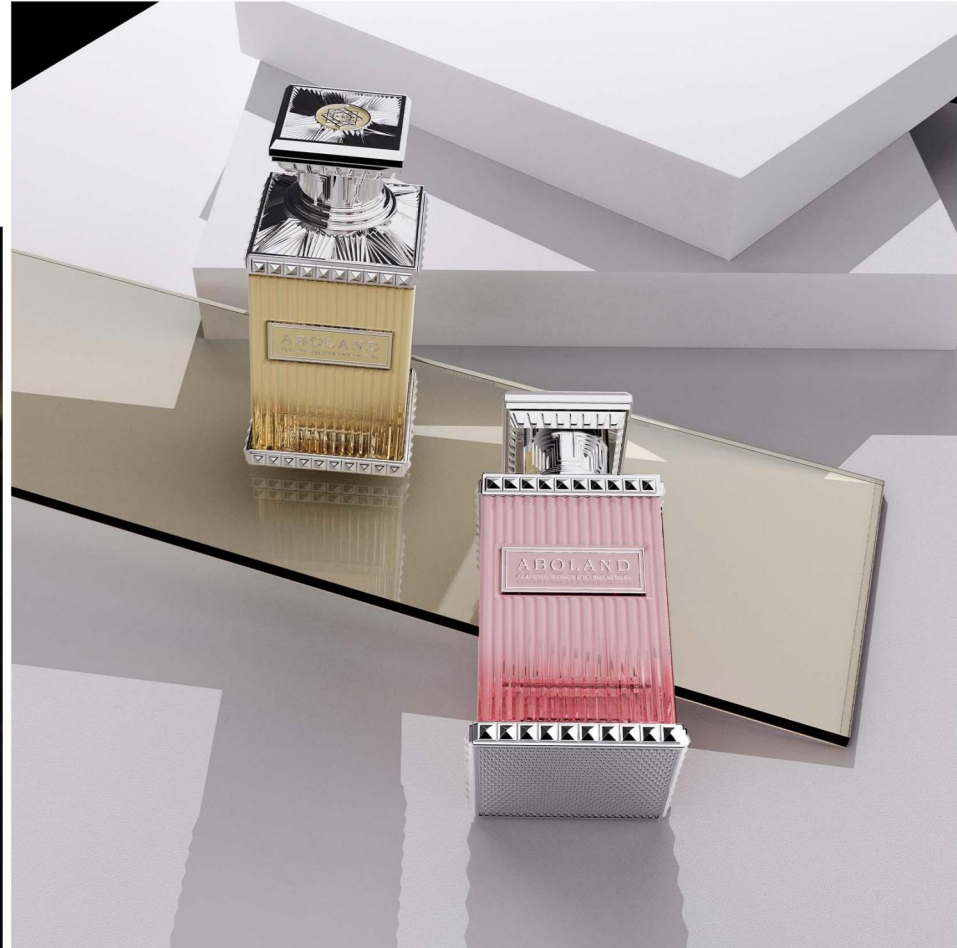


# *Empire State Building*

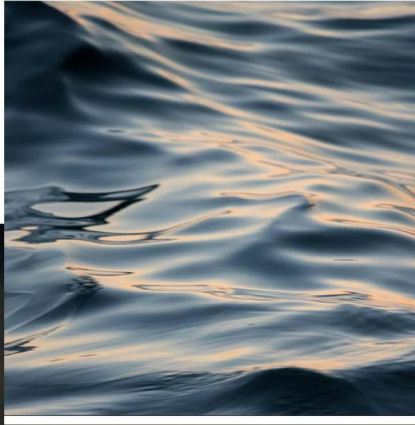


## Inspiration /

The name of the bottle is "Empire State Building", and the design draws on the straight lines and geometric beauty of the Empire State Building, revealing an air of stability and elegance. The Empire State Building is a building rich in history, and the design of the bottle is modern and up-to-date, reflecting the combination of history and modernity.



# Shadow

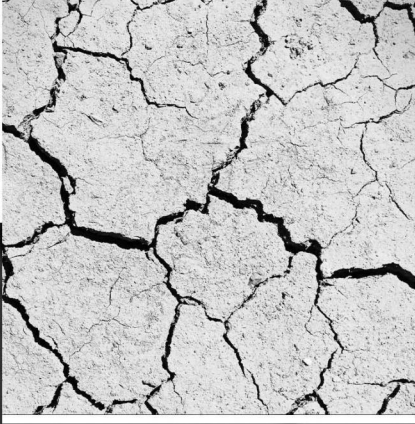


## Inspiration /

Inspired by the interplay of light and shadow, with a staggered diamond pattern captures and refracts light in a way that creates a mesmerizing dance of shadows, making the bottle a piece of art in its own right. When filled, the liquid highlights the light and shadow effects, creating an illusion of water waves. This dreamlike quality transforms the simple act of applying perfume into a sensory experience, where the visual and olfactory senses are equally engaged. The light and shadow interplay is reminiscent of a serene, undulating water surface, adding a layer of tranquility and sophistication to the bottle.



# Terre



## Inspiration /

The design of this perfume bottle is inspired by the dry and cracked earth, which is not only unique and profound, but also contains rich symbolic significance. The crack design on the bottle is not a simple decoration, but a carefully crafted artistic presentation. Every crack is a mark of challenge and breakthrough.

The bottle simulates the texture and color of the earth. The crack part is treated by special process to simulate the dry and cracked earth, so that it presents a more vivid and three-dimensional effect, so as to highlight its symbolic significance.



# *The Machinist*



## Inspiration /

The perfume bottle inspired by the machinist - a symbol of all-round, rigorous, research, wisdom, and execution. This fragrance is perfect for individuals who exude confidence and professionalism, just like anyone referred to as a "mechanic." It is a tribute to those who are engaged in engineering and research, acknowledging their honor and dedication.

The machinist has played a pivotal role in shaping human history, from the Enlightenment to the Industrial Revolution, the electrical age, to the information age, and now the AI intelligence age. They have been the backbone of promoting social development, constantly pushing the boundaries of what is possible and driving innovation.



# Medusa

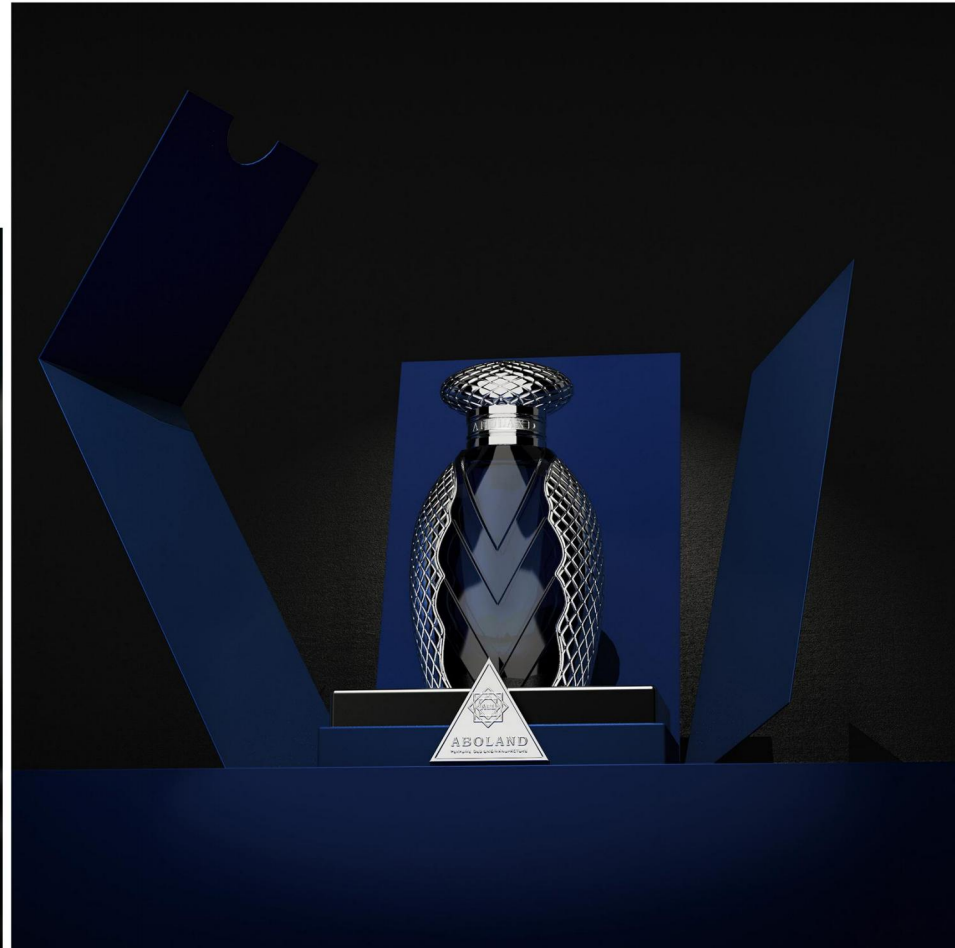


## Inspiration /

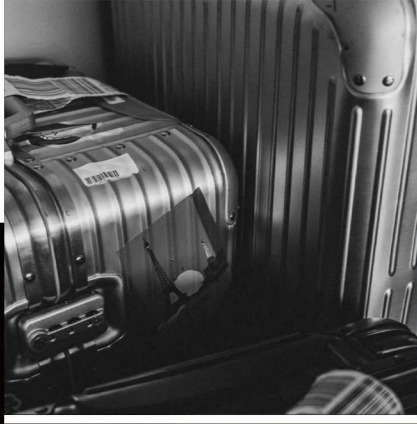
The design of the perfume bottle is inspired by Medusa, the snake-haired siren in ancient Greek mythology. Incorporating such mythological elements into the design of the perfume bottle gives the product a unique sense of mystery.

One of Medusa's most distinctive features is her snake hair. The perfume bottle is adorned with snake elements, in keeping with Medusa's temperament.

This design is not only eye-catching, but also stimulates interest and curiosity in this product.



# Suitcase

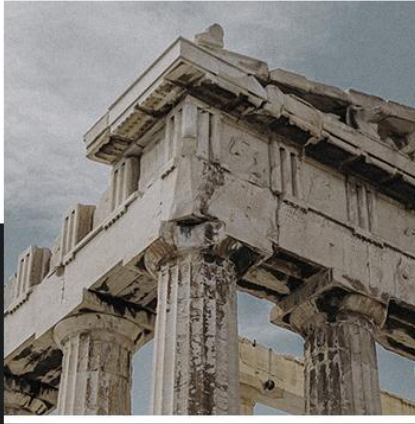


## Inspiration /

The perfume bottle as a whole is the outline of a classic suitcase, which breaks the inherent shape of the traditional perfume bottle. A carrying handle is designed at the top, echoing the handle of a traditional suitcase, but here it is cleverly incorporated into the perfume bottle design. The surface has been carefully finished and the texture is consistent with the texture of the suitcase. It is not only convenient for users to carry perfume bottles, but also further strengthens the design theme of its luggage.



# Doric Column



## Inspiration /

The design is inspired by the monumental ruins of the Parthenon Temple in ancient Greece, it was built in the 5th century BC as a dedication to the Greek goddess Athena. It is the epitome of elegance and sophistication. The roof consists of two slopes. At the eastern and western ends of the roof, triangular gables, known as pediments, are formed. These pediments were adorned with classical and intricate reliefs, transporting you to a bygone era. And its square shape and smooth curves give it a modern gesture. It is not just a perfume bottle, it is a piece of history, a tangible representation of the Doric order, and a symbol of timeless beauty.



# Rainbow

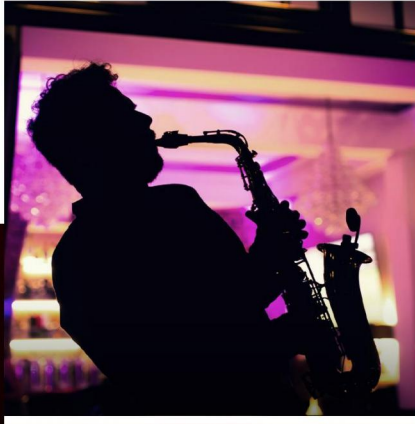


## Inspiration /

It is a collection of thousands of colors in one, is the horizon of the rainbow after the rain, add infinite brilliance to your life. Whether it's sweet pink, refreshing blue, or mysterious purple, there's always one that will touch your heart strings. The bottle is also cleverly added to a variety of patterns and metal decorations, making the whole perfume bottle more delicate. The metal decorations are eye-catching with a gorgeous glow against the light. The unique pattern design makes the rainbow perfume bottle more chic and full of artistic sense. Choosing a rainbow perfume bottle is to choose a changing attitude towards life.



# Jazz



## Inspiration /

The design inspiration for this perfume bottle flows like a mellifluous jazz composition, resonating from the elegant yet profound soul of jazz aristocracy. The cap's intricate carvings mirror jazz's sophisticated harmonic structures – every groove whispers stories, each tactile encounter transmitting the warmth of bygone eras. It embodies both untamed freedom and an ineffable aura of mystery. The bottle incorporates a metalizing shoulder, a conceptual echo of the symbiotic relationship between saxophone and jazz virtuoso – just as the saxophone's soul-stirring timbre breathes life into jazz, this metallic embrace mirrors the instrument's silent yet steadfast partnership with the musician, together composing jazz's golden symphonies.

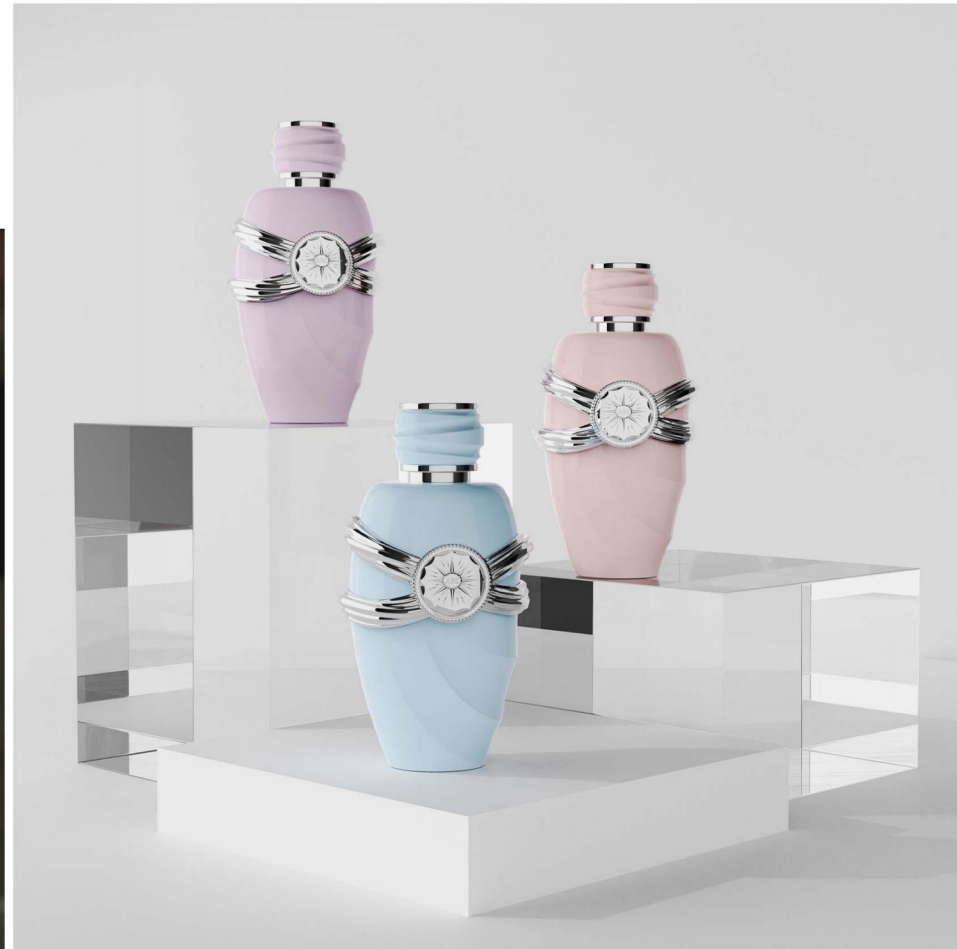


# Belt



## Inspiration /

The design of the perfume bottle is inspired by a belt. The perfume bottle itself uses a streamlined design, like a beautiful belt, gently around the palm, both elegant and dynamic. The neck part is cleverly inlaid with a circle of delicate gold decoration, highlighting the noble and extraordinary temperament. The bottle is wrapped in pink, white or brown silk material, and the luster and texture of silk add a little softness and luxury to this perfume bottle.



# Ice Cube



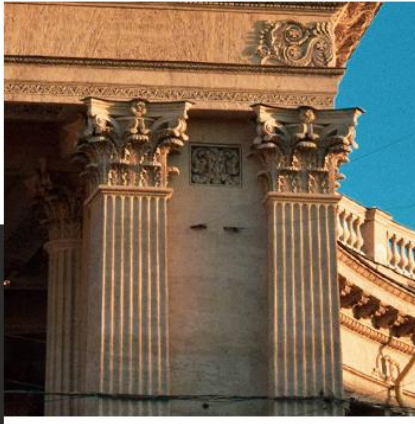
## Inspiration /

The bottle has taken inspiration from ice cube, the rounded corners in a sweeping arc, reminiscent of ice cube is slowly melting into the world. The bottle paired with a crystal clear glass cap, which exudes an air of elegance and refinement. The overall effect is reminiscent of the refreshing of white porcelain, evoking a sense of crisp purity.

The concept behind this intriguing design harkens back to ancient times when square ice cubes were utilized in rituals and ceremonies to prayerfully beseech for the arrival of ice and snow, a symbol of eliminating misfortune and ushering in good luck.



# Square Roman Column



## Inspiration /

This perfume bottles inspired by Roman architecture combine history with fashion. Square perfume bottles, borrowed from the square columns of Roman architecture. Every edge and corner is full of toughness and strength. The bottle is made of golden material, like the baptism of the years, emitting a timeless glory. The exquisite carving on the bottle cap is a clever reproduction of the elegance and grandeur of Roman architecture. The circular perfume bottle, based on the circular arch in Roman architecture, makes this perfume bottle reveal a noble temperament in the simplicity. These two perfume bottles are not only simple containers, but also witnesses to history. They carry the cultural heritage and artistic essence of ancient Rome and bring a unique aesthetic experience to modern life.



# Treasure Chest

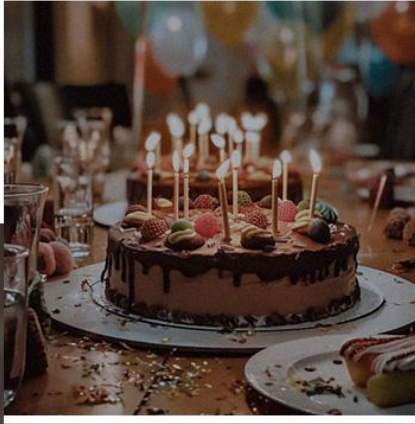


## Inspiration /

The perfume bottle's overall design embodies a delicate and enigmatic treasure chest, steeped in a captivating retro ambiance. Its surface is adorned with intricate, elegant line designs that draw the viewer in, hinting at the treasures that lie within. Upon opening the bottle, one feels as though they are embarking on an exhilarating exploration of hidden riches. This treasure chest-inspired perfume bottle not only serves its practical purpose but also stands as a masterpiece of artistry, evoking a profound sense of curiosity and longing for the mysteries of the unknown world.



# *Birthday Cake*



## Inspiration /

This unique and captivating perfume bottle is designed to resemble a delightful slice of birthday cake, complete with intricate frosting swirls and delicate sprinkles. It's a true feast for the eyes and a delightful addition to any vanity or dressing table. The Birthday Cake Perfume Bottle Design is the perfect blend of playful charm and sophisticated elegance. The attention to detail in the design ensures that every aspect of the perfume bottle captures the essence of a delectable birthday treat. The frosting swirls are intricately crafted to resemble the soft, creamy texture of frosting, while the sprinkles add a touch of whimsy and fun. The overall design exudes a sense of joy and celebration, making it the ideal gift for any fragrance lover or those who appreciate the finer things in life.



# *Jack O'lantern*



## Inspiration /

In the vast perfume world, a unique pumpkin shaped perfume bottle stands out, which perfectly blends the elements of nature with the charm of fashion.

The designer cleverly combined the natural orange color with the black wizard hat, the symbol of Halloween, to create an aesthetic that is both mysterious and vibrant.

This is not only a perfume, but also a work of art, allowing people to enjoy the aroma while feeling the beauty and mystery of nature.



# Table Lamp



## Inspiration /

The inspiration combines home decor and perfume bottles, imagining the smooth and trapezoidal outline of the lamp as perfume bottles, showing a modern elegant gesture. Not only a perfume container, but also the pursuit of exquisite life.



# Golden Rope

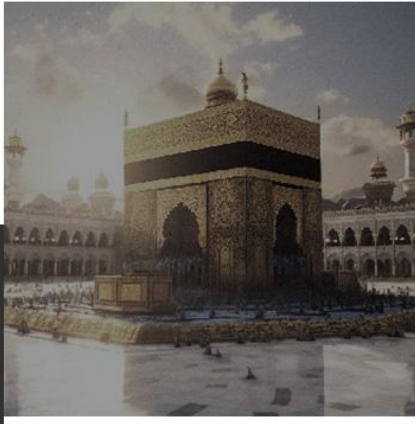


## Inspiration /

The serene and composed appearance of the bottle, adorned with a lustrous golden rope, emanates an air of dignity and sophistication. The golden rope not only represents longevity but also stands as a symbol of prosperity and the pursuit of a fulfilled life.

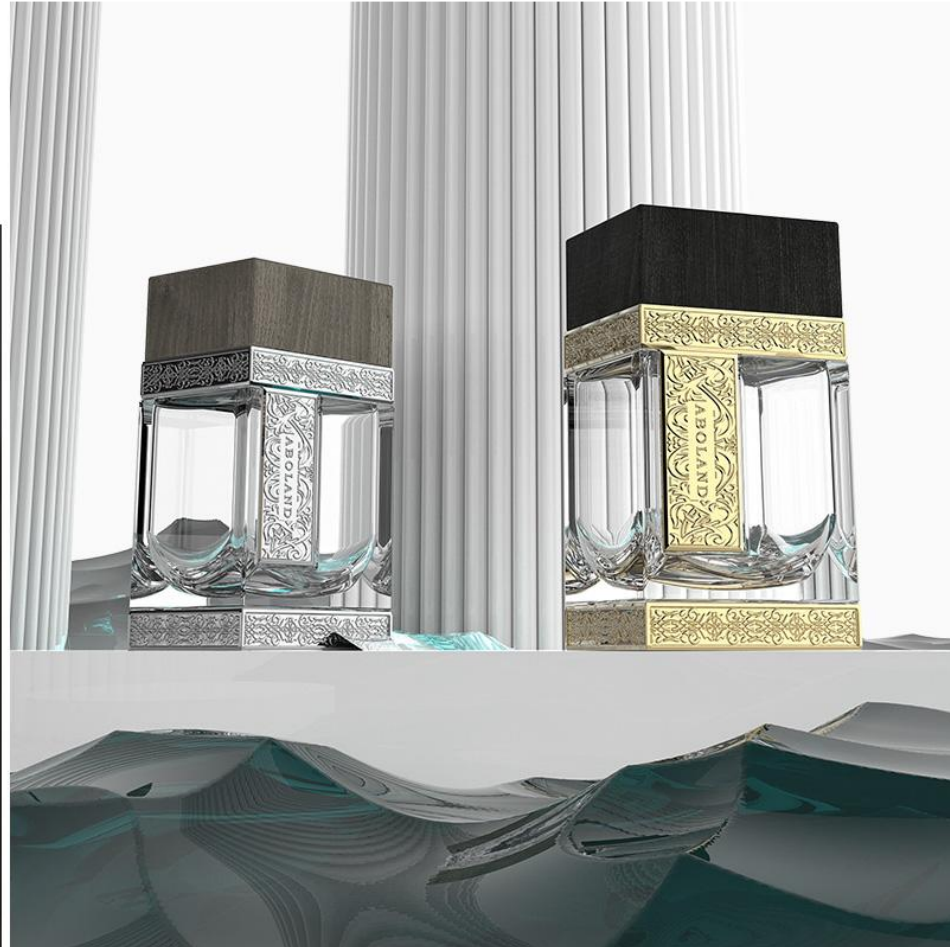


# The Kaaba



## Inspiration /

Inspired by the majestic beauty of the Kaaba. The shape of the perfume bottle is a reflection of the Kaaba itself, with its sleek and elegant lines mirroring the striking architecture of the sacred structure. The decoration of the bottle is a nod to the Kaaba's iconic black fabric covering, creating a sense of reverence and spirituality. It is not just a perfume bottle, but a symbol of spiritual connection and a reminder of the beauty and majesty of the Kaaba. It is a way to carry a piece of the sacred city with you wherever you go, allowing you to experience a sense of peace and tranquility wherever you are.



# Lady



## Inspiration /

When the perfume bottle comes across a lady's hat brimming with French charm, an exquisite elegance is fully showcased. The surface of this perfume bottle is crafted with delicate flocking technology, creating a subtle resonance in material and texture with the French hats that ladies adore. That hat, with its smooth lines, outlines the delicate facial features of the wearer, and every detail reveals the artisan's superb craftsmanship and ultimate pursuit of beauty. When the wearer holds this perfume bottle and gently twists open the cap, it's like a romantic fashion rendezvous, allowing the wearer to exude an elegant demeanor in every gesture and become the elegant focal point in a crowd.



# Cowboy



## Inspiration /

The cap of this perfume bottle boldly draws inspiration from the legendary elements of Western cowboys, meticulously crafted into a shape resembling the classic "Stetson" wide-brimmed, high-crowned felt hat. The expansive brim seems capable of shielding the wearer from the raging winds and sands of the Western wilderness, opening up a realm of freedom; while the towering crown appears to narrate the unbridled spirit of cowboys, exuding a heroic aura that soars towards the heavens.

The cowboy hat has always been a symbol of the free-spirited ethos and an enduring classic. As time marches on and fashion trends come and go, the spirit of freedom, bravery, and resilience embodied by the cowboy hat remains unwavering. When combined with a perfume bottle, it enables every wearer to emanate a fashionable aura of unrestrained freedom with every gesture, becoming the most dazzling focus in the streets and alleys.



# Impression



## Inspiration /

The overall silhouette of this perfume bottle resembles an engraved seal capturing footprints, which inspired its name "Impression". The vessel features a cuboid structure defined by clean, bold lines that sketch a distinctive contour, embodying both the dynamic rhythm of modern fashion and an inner essence of steadfast, resolute character. The accompanying cap inherits this cohesive design philosophy, visually complementing the bottle to create a sublime balance and harmonious aesthetic. Whether displayed in any setting, its unique charm leaves an indelible mark in the viewer's consciousness through this profound symbolic embodiment.



# He & She

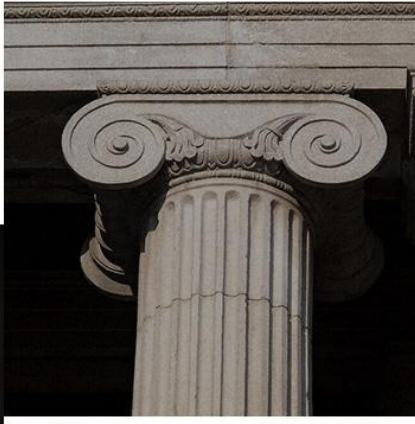


## Inspiration /

The design is inspired by the elegant lady and gentleman, integrating the elegant temperament of women and the steady and personable temperament of men into the bottle. The bottle has a square body, neat lines, simple and attractive appearance. The fancy rexine adds elegance and luxury to the toughness of the bottle.



# *Ionic Column*



## Inspiration /

The design inspiration comes from the Ionic column, the cap is like the scroll of the Ionic column, the bottle is the base, and the texture is linear to express the traces left by the wind and rain.



# Crystal Heart



## Inspiration /

"Crystal Heart" is inspired by the gem cut design, the irregular cut can produce a beautiful luster, just like crystal clear. The design concept of crystal stands for purity and elegance. You can see that in the sunshine, it will be more beautiful and charming. It's suitable for every customer and elegant perfume.



# Pine Cone



## Inspiration /

The design of this perfume bottle draws inspiration from pine cones, incorporating the wonderful elements of nature. The bottle is based on the texture and shape of pine cones, and through the clever combination of geometric patterns, it presents a unique three-dimensional relief effect. The bottle is like a dry pine cone shell, warm and simple, exuding a strong natural atmosphere.

The design of the bottle cap is inspired by the scales of pine cones, each of which is carefully carved, as if telling the countless secrets and hopes hidden in the pine cone. The pattern on the bottle is like the texture of a pine cone, intricate and rhythmic, as if it is shining in the sun.



# Courage



## Inspiration /

The inspiration for this bottle comes from the "Courage" which is full of strength and determination. The smooth and straight lines of the bottle are precise and powerful, just like an upright and determined warrior, without any meandering and hesitation. The unique design of the four corners of the bottle is the finishing touch, with their angular shape, showing decisive courage, as if to tell the world that, in the face of all the choices of life, we must dare to face up to the courage to make decisions.



# *Partiality*

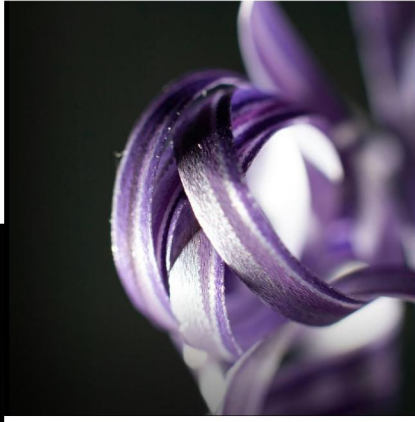


## Inspiration /

The main body of the bottle focuses on the left side to add design, this unique shape, like a side of the balance, breaking the traditional symmetry and balance of the conventional, highlighting an uninhibited and unique style. This seemingly unbalanced but full of tension design symbolizes the collision and fusion of different personalities.



# Ribbon



## Inspiration /

This design is inspired by the visual effect of being wrapped by a ribbon, which adds a romantic and soft element to the main design. This design combines the romance and elegance of the ribbon with the charm of the perfume itself, bringing users multiple visual, tactile and olfactory enjoyment.

The threaded design of the cap matches the bottle, reflecting the exquisite and elegant design style



# Obsidian



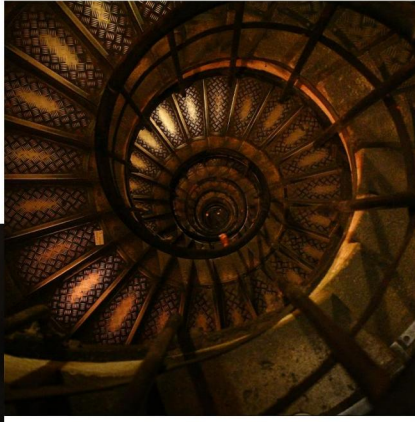
## Inspiration /

The cap of this perfume bottle is masterfully designed in a flawlessly smooth black hue, boasting an unconventional shape reminiscent of an obsidian stone weathered by time and meticulously polished by artisans. Each curve exudes an air of refined taste and profound depth, sitting serenely atop the bottle's neck as both a tribute to obsidian's primordial beauty and a perfect embodiment of understated luxury, radiating an ineffable allure.

Complementing this striking cap is a minimalist yet sophisticated square flacon. Its clean, decisive lines eschew excessive ornamentation, demonstrating the essence of modern design through near-ascetic simplicity. The complete composition artfully harmonizes the mystique of obsidian, the opulence of the cap, and the contemporary aesthetic of the square vessel. This creates a visual narrative that is simultaneously streamlined and potent, as if every inch of space contains the infinite charm and energy of obsidian itself, awaiting discovery by discerning individuals who appreciate the convergence of geological wonder and human craftsmanship.



# Vertigo



## Inspiration /

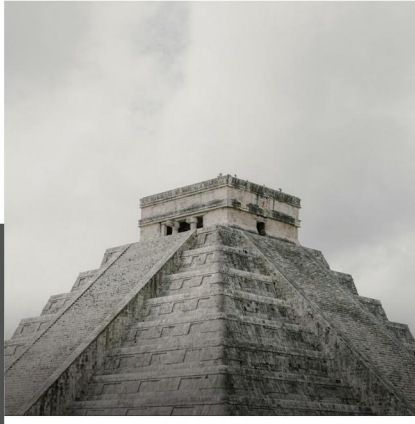
"Vertigo" perfume bottle cleverly combines the visual metaphor of winding stairs with the senses evoked by fragrance.

The lines of the bottle twist and rise like a spiral staircase, breaking the stability of the vertical space. When the fragrance spreads, the freshness of the front note and the thick of the back note form an olfactory tension, like a sense of spatial dislocation in the stairwell.

The name is also a nod to the classic imagery of the spiral staircase in the film *Vertigo*, portraying the perfume bottle as a "portable maze."



# Mayan Pyramids

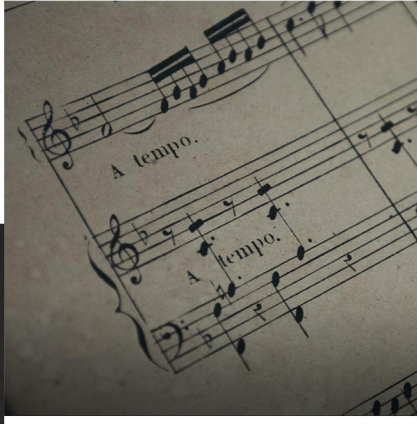


## Inspiration /

In Mayan cosmology, pyramids served as celestial bridges connecting earth to the heavens, where each ascending tier symbolized a distinct phase in the journey toward the divine realm. Reimagining tradition, the creators eschewed conventional perfume cap designs in favor of the iconic four-sided stepped silhouette of Maya pyramids. Every meticulously calculated and crafted layer preserves the monument's majestic solemnity while embracing the inherent delicacy and transcendent elegance befitting a perfume vessel. This design stands not merely as homage to Maya architectural brilliance, but as a cross-temporal cultural dialogue – each act of uncapping becomes a silent communion with ancient wisdom, where modern fingertips trace the sacred geometry of a civilization lost to time yet resurrected through design.



# Stave



## Inspiration /

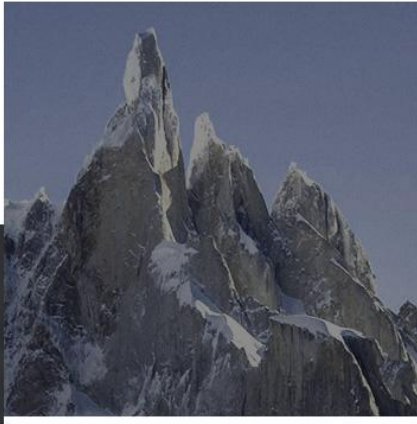
This stave-inspired, guitar-shaped perfume bottle design is a wonderful fusion of music and fragrance aesthetics.

The silver lines flow on the transparent bottle, interweaving light and shadow with the color of the fragrance, making the static perfume bottle become a dynamic visual melody.

The bottle cap and the bottle body adopt a special structure, which emits a crisp "click" sound when opening and closing, just like plucking the strings and playing the movement.



# Iceberg



## Inspiration /

The design was inspired by icebergs. The bottom of the bottle is shaped like an iceberg, which was crystal clear. And the shoulder shape also can connect with the iceberg shape to match the bottom. The gradient color can greatly stand out the iceberg, it will be more attractive when your customer saw this bottle in the first time.



# The Mermaid



## Inspiration /

The design is inspired by mermaids. The curves of the mermaid are integrated into the design of the bottle. The image of the mermaid is full of mysterious and unknown charm, sexy and deadly. The metal appearance increases visual recognition, expresses a magical sense of mystery, and represents elegance mysterious and sexy temperament.



# *Egyptian Pyramids*



## Inspiration /

The design of this bottle is as solid and elegant as a pyramid, symbolizing resilience and permanence. Its unique construction not only pays homage to the geometric art of ancient Egypt, but also symbolizes the longevity and depth of the fragrance. Each side of the bottle is meticulously polished, like a pyramid over time, giving off a unique historical flavor.



# Attractive



## Inspiration /

The bottle cap cleverly adopts the design of magnetic cap. It can be tightly attached with a light closing, just like the irresistible attraction between magnets, which perfectly fits the theme of "attraction". This design is not only novel and unique, but also makes people feel an inexplicable charm and fun every time it is opened and closed.

The surface of the bottle uses exquisite metal brushing technology. The delicate and orderly brushed lines shine under the light, like a strong attractive electrode, exuding a charming luster. These lines not only add to the texture and beauty of the bottle, but also seem to have an invisible power, attracting people's attention, making people want to reach out and touch it, and feel the unique charm of metal.



# Mechanical

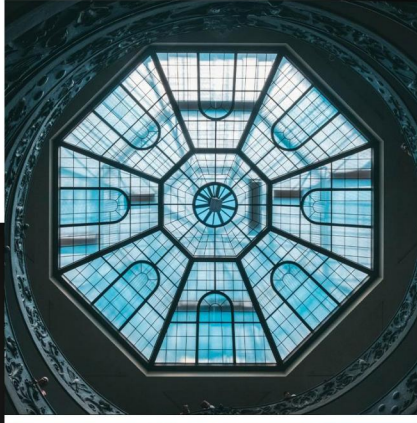


## Inspiration /

This bakhoor jar blends mechanical elements with minimalist style. The metal design shimmers with a cool and glamorous sheen in the light, outlining a futuristic silhouette with smooth lines. The precision of the gears and the simplicity of the lines create a bakhoor jar that is both technological and natural, like a treasure wrapped in a mechanical heart, slowly releasing the fragrance of nature.



# Azure



## Inspiration /

Each glass container is a perfect blend of tradition and modernity. The design showcases the ultimate charm of geometric aesthetics with its unique octahedral form. The top cap in different colors mirrors the transparent body of the bottle, which is both robust and lightweight. The top cap is decorated like the brightest star in the night sky, adding a touch of extraordinary light to the ordinary daily life. It embodies the designer's unique vision and relentless pursuit of beauty.



# Gentry



## Inspiration /

The body of the bakhoor jar is decorated with delicate vertical grain carvings, and each grain has been carefully polished, just like the exquisite stitching of haute couture, showing the beauty of high-quality texture and craftsmanship. Highly metallic to create, exudes a charming sense of luster, both show dignity, but also very low-key luxury, every wisp of fragrance is full of gentleman's elegance and calm.



# *Four-Leaf Clover*



## Inspiration /

This bakhoor jar with four-leaf clover elements combines nature with practical design. The four-leaf clover is a symbol of luck and hope, and its unique shape of four leaves has been cleverly integrated into the design of the spice jar, adding a touch of warmth and beauty to daily life.

The surface of the jar is embossed with four-leaf clover, which is not only beautiful and generous, but also means that the people who use this bakhoor jar will be able to enjoy the company of luck and happiness.



# Heavy Metal



## Inspiration /

This glass jar called Heavy Metal features a classic blue logo with a geometric pattern that is simple yet stylish. Every line is carefully sculpted, exuding a mechanized sense of technology, as if every square is movable and free to put together, implying mysterious technology and anticipation for the world of the future.

